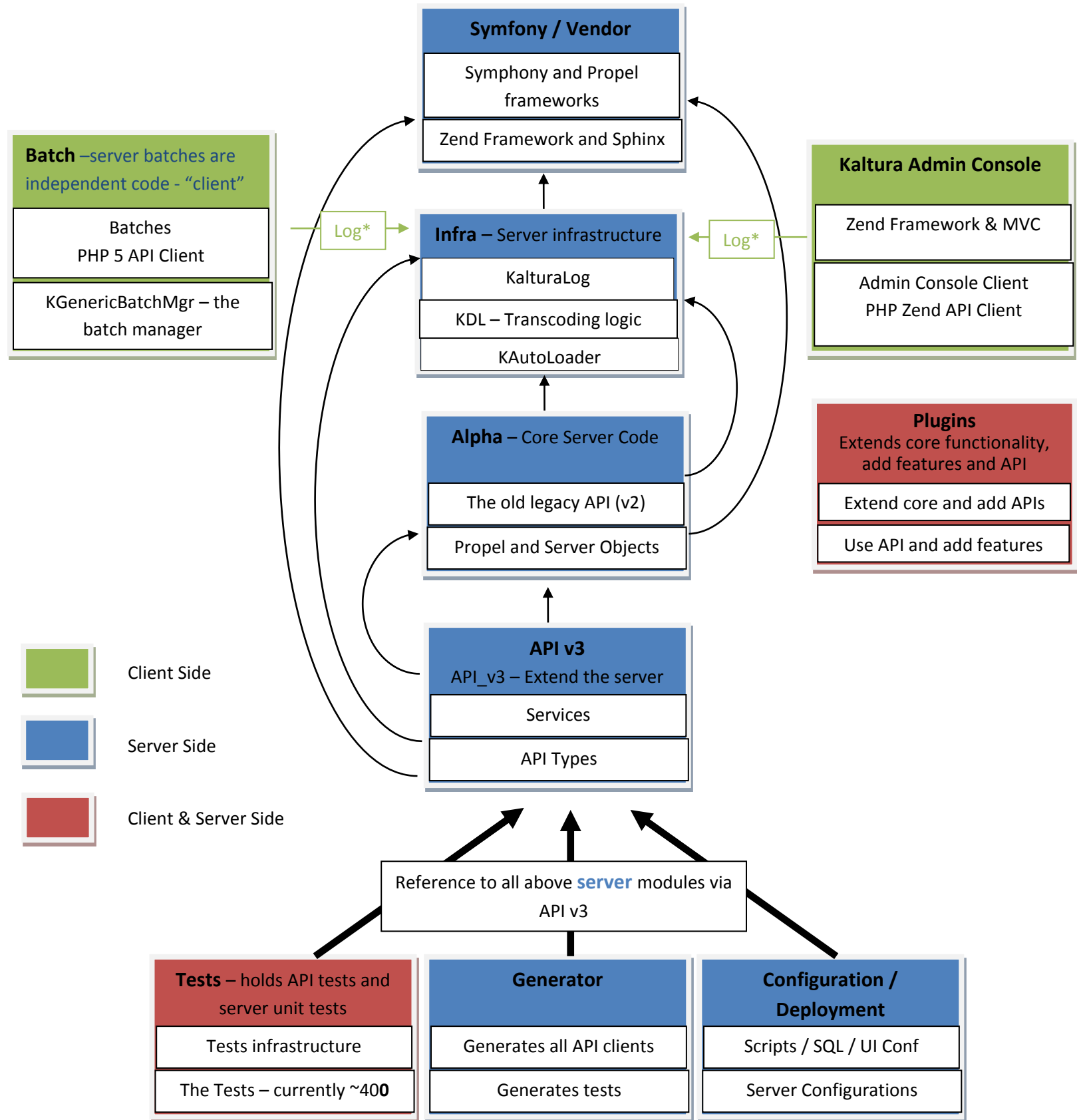


# The Kaltura Server Folder Structure Logical Diagram



- KDL is the Kaltura Decision Layer. This holds the media transcoding and encoding logic.
- API v2 is the legacy Kaltura API. It is maintained for backward compatibility. API v2 is deprecated and should not be used.
- Plugins (found in the plugins folder) can directly access all other folders in the core server and is used to extend every core aspect of the Kaltura server.
- Batches are another form of Plugins that were built to leverage sophisticated API based structure that allows decoupling batch clients and deployment on remote servers.